



A MEMBER OF SARASWANTI

# Saraswanti Indo Genetech Company Profile

[www.siglaboratory.com](http://www.siglaboratory.com)





• Foreword

# ONE STOP LABORATORY SERVICES

PT. Saraswanti Indo Genetech or SIG Laboratory (Registration number. LP-184-IDN) is a testing laboratory located in Bogor - Indonesia and is the first laboratory in Indonesia to be accredited with ISO / IEC 17025 by the National Accreditation Committee (KAN) for the scope of GMO (Genetically Modified Organisms).

To meet customer needs, over time SIG Laboratory has successfully developed its market testing capabilities for food and feed products, beauty and care products, pharmaceuticals, traditional medicines, medical masks, textiles, electronics, substance of concern for automotive devices, antiseptic and disinfectant products, toxicity and efficacy testing, research for academic needs, to the provision of ready-to-use microbial test media. When customers need laboratory testing for research, registration, export and import purposes as well as internal quality control, that is where the existence of a SIG Laboratory is very meaningful.

## • Laboratory Services

# TESTING & SERVICE CATEGORIES

As one of the largest independent research and testing laboratories in Indonesia, SIG Laboratory is the right partner for all groups, both commercial institutions, educational institutions, research, and individual needs to entrust their testing to SIG, because SIG:

- Ensuring the quality of test results with Quality Assurance
- Using the latest technology and testing methods
- Customer satisfaction oriented
- Providing research and development services
- Facilitating registration procedures
- Testing at competitive prices
- Serving Sampling and SWAB Tests
- Serving Free Sample Pick Up \*



### 1. Food & Feed Testing

- Dioxins
- Vitamins
- Antibiotics
- Mycotoxins
- Microbiology
- Amino Acids
- Heavy Metals
- Shelf Life Test
- Food Authenticity
- Solvent Residues
- Pesticide Residues
- Nutrient Content
- Packaging & Migration
- Product Quality (SNI)
- GMO & Molecular Biology
- Identification of Pig or Cow DNA
- Food Additives (Dyes)
- Food Additives (Sweeteners)
- Food Additives (Preservatives)

### 2. Beauty & Personal Care

- Hydroquinone
- Heavy Metal
- 1.4 - Dioxane
- Retinoic Acid
- Product Stability
- Forbidden Dyes
- Cosmetic Preservatives
- Corticosteroid Compounds

### 5. Substance of Concern for Automotive Parts

- PFOS
- Asbestos
- Heavy Metal
- Hexavalent Chromium
- Dimethylfumarate (DMF)
- PBBs, PBDEs, and HBCDD

### 7. Toxicity & Efficacy Tests

- Acute Toxicity (LD50)
- Oral & Dermal Acute Toxicity
- Subchronic Toxicity
- Efficacy Test

### 10. Research for Academic Purposes

### 11. Screening of Unknown Compounds Using Advanced Technology Such as LCMS Qtof & GCMSMS

### 3. Pharmaceuticals & Traditional Drugs

- Solubility Test
- Hardness Test
- Destruction Test
- Drug Authenticity
- Product Stability
- Trial & Method Validation

### 6. Antiseptic & Disinfectant

- Antimicrobial Test AOAC/EN Method
- Antimicrobial Test (Inhibition Zone/Disc)
- Antimicrobial Test for Wet Wipe Products
- Antimicrobial Test with Regards to Different Applications
- Effectiveness Testing of Microbial Mortality in UV Lamp Products
- Disinfectant Testing Against Salmonella typhi (Phenol Coefficient Method)

### 8. Medical Mask Testing According to EN 14683:2019

- Bacterial Filtration Efficiency (BFE)
- Differential Pressure
- Microbial Cleanliness / Bioburden

### 4. Textile & Electricity (K3L)

- Formaldehyde
- Azo Compounds
- Phthalate Compounds
- Extracted Heavy Metals
- Waterproof Chemicals
- Fire Resistant Chemicals
- Current Leakage Test
- Protection Test Against Touchable Active Parts

### 9. Essentials Product by SIG Laboratory

- Ready To Use Media - Agar
- Ready To Use Media - Broth
- SWAB Test Kit

Contact us for more details or queries regarding other tests

• Certification

# CERTIFIED & ACCREDITED

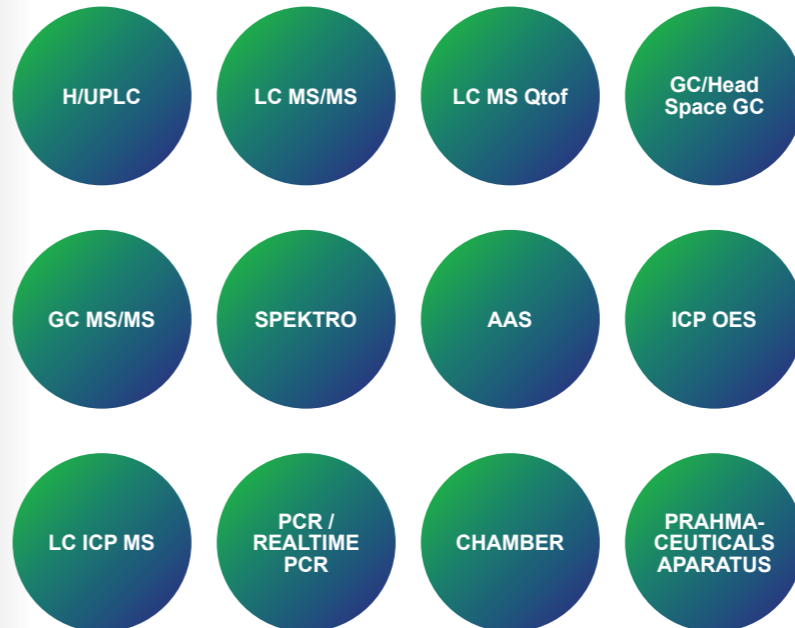
PT. Saraswanti Indo Genetech or SIG Laboratory (registration number LP-184-IDN) is regularly accredited by the National Accreditation Committee for the scope of the category of testing laboratories according to ISO / IEC 17025: 2017 so that the quality of testing and test results is always maintained.

ACCREDITED TESTING  
& ANALYSIS LABORATORY  
ISO/IEC 17025:2017



• Hi-Tech Instrument

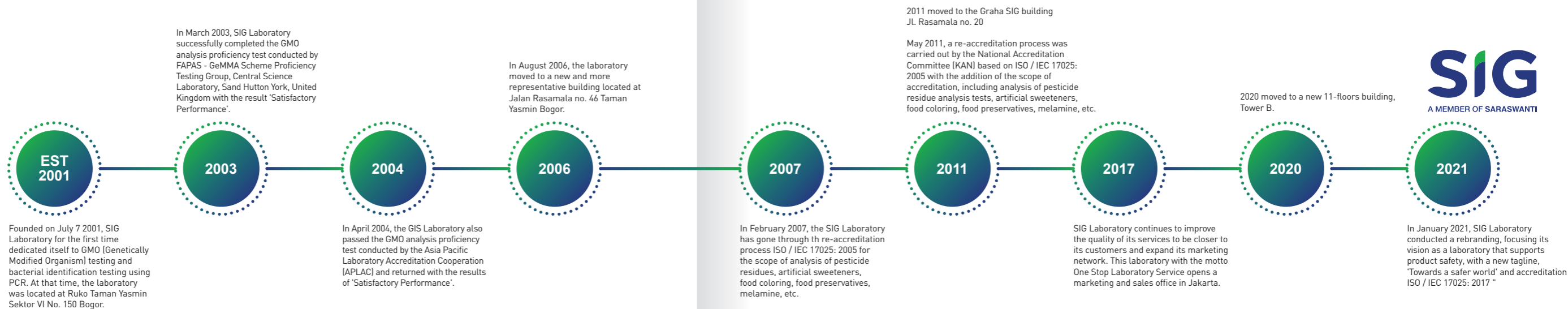
Our service is fully supplied using the best machines and technologies.



• Corporate Milestone

# CORPORATE MILESTONE

PT. Saraswanti Indo Genetech Bogor is a collaboration between PT. Saraswanti Anugerah Makmur Surabaya and the Indonesian Center for Biodiversity and Biotechnology (ICBB) Bogor Foundation. PT. Saraswanti Indo Genetech Bogor is a subsidiary of the Saraswanti Group.



• About SIG Laboratory

# CORPORATE VISION & MISSION

PT. Saraswanti Indo Genetech is the first laboratory in Indonesia to be accredited by the National Accreditation Committee (KAN) for the scope of qualitative and quantitative testing of GMOs (Genetically Modified Organisms)

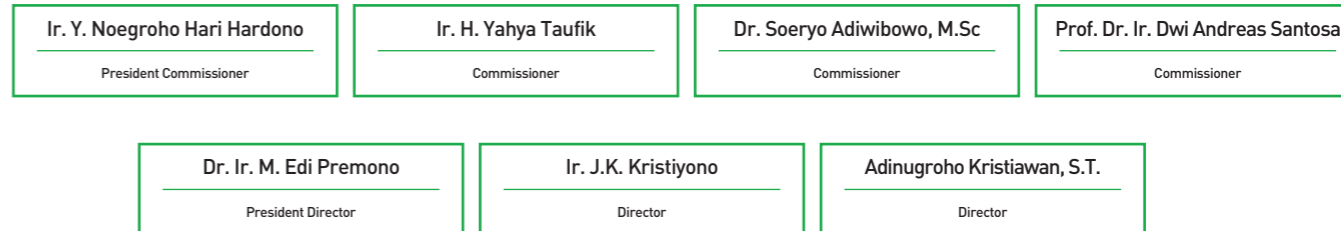
### Our Corporate Vision:

- Become a credible **ONE STOP LABORATORY SERVICES** who can devote himself to the future and prosperity of Indonesia.
- Become an analytical laboratory with qualified competencies and accurate, precise and fast analysis results.

### Our Corporate Mission:

- Customer satisfaction oriented.
- Applying good professional practice.
- Applying the work principle "right from the start" according to the quality management system ISO / IEC 17025: 2017 and increasing the effectiveness of the quality management system in a sustainable manner.

## Commissioners, directors and shareholders of PT. Saraswanti Indo Genetech

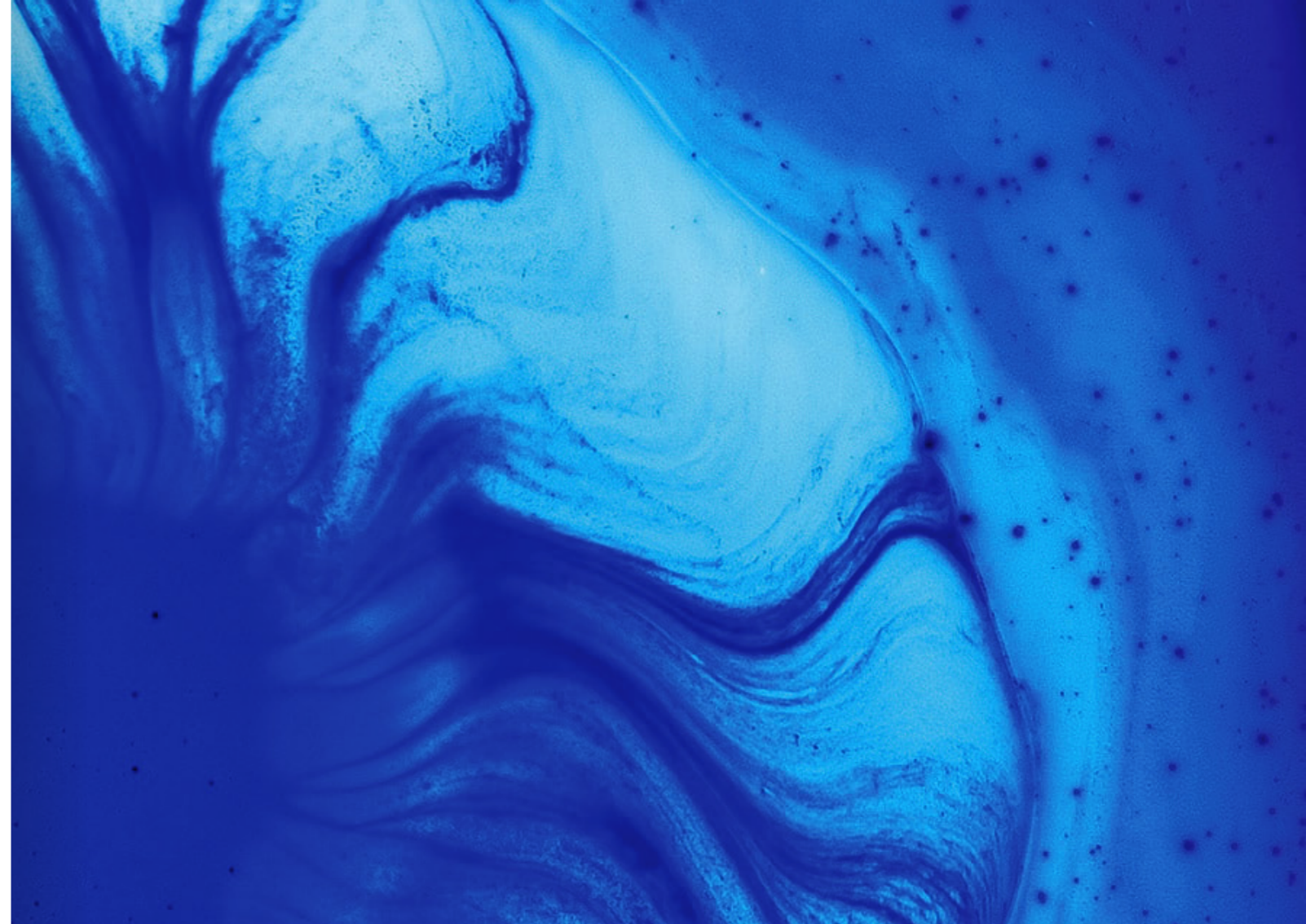




- **Komitmen Kami**

## **Towards a safer world**

Our commitment - As an accredited laboratory, SIG is committed to playing an active role in supporting the creation of a safer world by producing accurate and reliable product test analysis data. With more than a decade of experience and supported by experts in their fields and modern equipment, GIS testing and research results are expected to be of benefit to all people, from individuals, businesses, to government regulatory policies.



ACCREDITED BY:



**Main Office & Laboratory:**

Graha SIG Jl. Rasamala No. 20 Taman Yasmin,  
Kota Bogor, Jawa Barat 16113,  
**Phone.** +62251 7532348

**Jakarta Branch:**

Jl. Percetakan Negara No. 52 B RT 06/RW 01,  
Rawasari, Cempaka Putih, Jakarta Pusat  
**Phone.** +6221 21479292

**Surabaya Branch:**

Surya Inti Permata Blok A 51-52 Jl. Raya Bandara Juanda,  
Sedati, Sidoarjo, Jawa Timur 61253,  
**Phone.** +6231 8678555

**Hotline.** +6282 111 516 516

**Email.** [marketing-sig@saraswanti.com](mailto:marketing-sig@saraswanti.com)

**SIG Laboratory**

**@sig\_lab**

**[www.siglaboratory.com](http://www.siglaboratory.com)**



TERAKREDITASII OLEH:



**Kantor Pusat & Laboratorium:**  
Graha SIG Jl. Rasamala No. 20 Taman Yasmin,  
Kota Bogor, Jawa Barat 16113,  
**Phone.** +62251 7532348

**kantor Cabang Jakarta:**  
Jl. Percetakan Negara No. 52 B RT 06/RW 01,  
Rawasari, Cempaka Putih, Jakarta Pusat  
**Phone.** +6221 21479292

**Kantor Cabang Surabaya:**  
Surya Inti Permata Blok A 51-52 Jl. Raya Bandara Juanda,  
Sedati, Sidoarjo, Jawa Timur 61253,  
**Phone.** +6231 8678555

**Hotline.** +6282 111 516 516  
**Email.** [marketing-sig@saraswanti.com](mailto:marketing-sig@saraswanti.com)

 **SIG Laboratory**

 **@sig\_lab**

**[www.siglaboratory.com](http://www.siglaboratory.com)**